

All rights for the pictures contained in this bulletin are protected



Unsafe lifting technique that could cause back problems

Insufficient barricading during paving maintenance works.

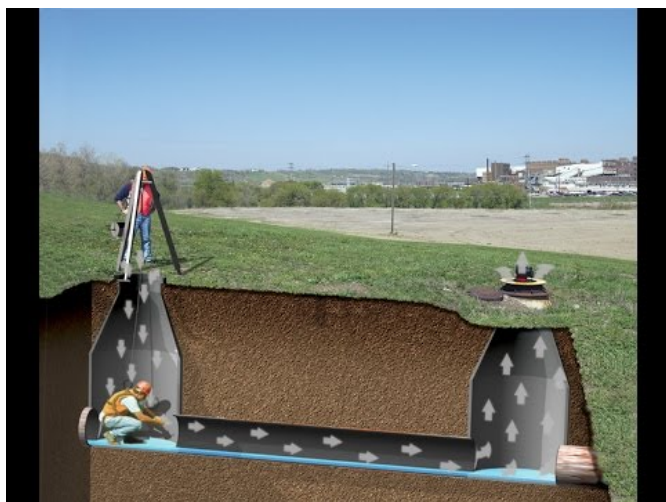
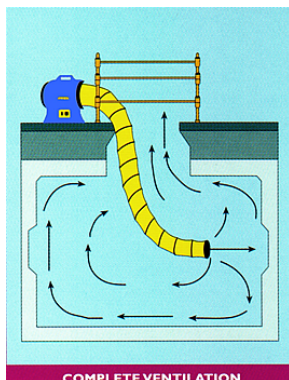


Maintenance personnel must ensure that the main electrical panels should be kept locked at all times; in this case, this panel is located at a highly pedestrian circulation area (shopping mall) so the electrocution hazard is obvious).



Fire point during maintenance works accessibility is quite problematic.





Confined space reminder

Never forget, before entering a confined space area

- To get a permit
- To ensure proper ventilation
- To use the Confined Space tripod for access and rescue